

Anti- SLC2A3 / GLUT3 antibody, rat monoclonal (#10)

74-200 100 μ g

Storage: Shipped at 4°C. Spin-down and store at -20°C.

Immunogen: Mouse sperm

Reactivity: Mouse SLC2A3/GLUT3. .

Applications

1. Western blotting (1/200-1/500)
Not tested for other applications

Form: Purified monoclonal antibody (IgG) 1mg/ml in PBS, 50% glycerol, filter-sterilized.
Azide- and carrier-free.

Isotype: Rat IgG

Function: Facilitative glucose transporter. Probably a neuronal glucose transporter.
Abundant in sperm tail.

Molecular mass: 53,479 with 493 amino acids..

Background: SLC2A3 is facilitative glucose transporter that can also mediate the uptake of various other monosaccharides across the cell membrane. Mediates the uptake of glucose, 2-deoxyglucose, galactose, mannose, xylose and fucose, and probably also dehydroascorbate. Does not mediate fructose transport.

Database Links: UniProtKB [P32037](#) (GTR3_MOUSE)

Reference: This antibody has been used in the following publication.

Fujihara Y. et al. Expression of TEX101, regulated by ACE, is essential for the production of fertile mousespermatozoa. [Proc Natl Acad Sci U S A](#). 2013 May 14;110(20):8111-6. doi: 10.1073/pnas.1222166110. **WB**

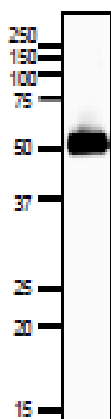


Fig.1 Western blotting of SLC2A3 protein in mouse sperm. The antibody was used at 1/500 dilution. Note that SLC2A3 is abundantly expressed in sperm.

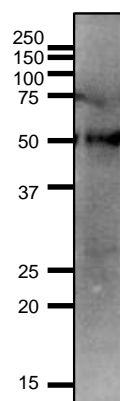


Fig.2 Western blotting of SLC2A3 protein in mouse sperm. Antibody was used at 1/500 dilution. Expression level of SLC2A3 in testis is much less than in sperm.