

Prestained Protein Marker, Broad Range, Ready to use

02-440 250 ul

Prestained Protein Ladder, Broad Range (12-270 kDa) is a mixture of highly purified proteins covalently coupled to a blue dye that resolves into 8 bands when electrophoresed. The covalent coupling of the dye to the proteins affects their electrophoretic behavior on SDS-PAGE gels relative to unstained proteins. The apparent molecular weights of the Prestained Protein Ladder bands were determined on 10–20% Tris-glycine SDS-PAGE gels by comparison to the Protein Ladder (BioAcademia 02-460 Protein Size Marker). The Prestained Protein Ladder is suited for use in SDS-PAGE and western blotting applications. It allows continuous monitoring of protein separations during electrophoresis and also provides a quick and easy way to assess blotting efficiency.

Storage Temperature: -20°C

Solution: 70 mM Tris-HCl, 33 mM NaCl, 40 mM DTT, 1 mM Na₂EDTA, 30% Glycerol
2% SDS, pH 6.8 at 25°C

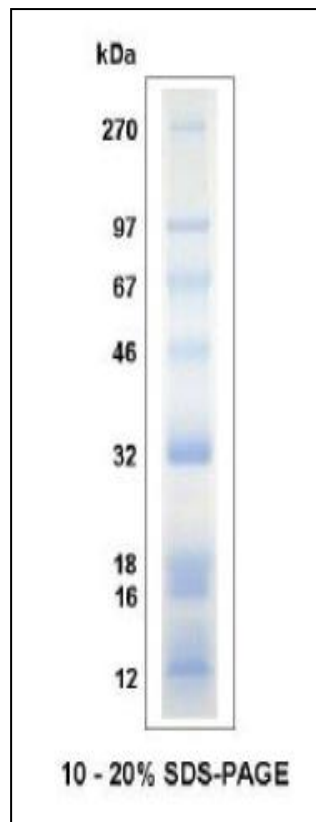


Figure. 10-20% Tris-glycine SDS-PAGE gel.

Related Product: 02-460: Protein Size Marker (unstained), broad range