

Anti- KDM5A / RBP2 / JARID1A antibody, mouse monoclonal (9A6)

71-175 100 ug

RBP2 (1,690 aa, 192 kDa) was originally identified as a retinoblastoma binding protein. It is also known as JARID1A (Jumonji, AT rich interactive domain 1A) and KDM5A (gene name). RBP2 plays both negative and positive roles in RB-mediated transcriptional activation, depending on the kinds of genes and regulates differentiation by its function as an H3K4 histone demethylase.

Applications

1. Western blotting (~1 µg/ml) Other applications were not tested.

Immunogen: A synthetic peptide corresponding to human RBP2, amino acids 1416-1434.

Isotype: Mouse IgG2a kappa

Purification: IgG fraction is purified from supernatant of culture in serum-free medium under mild conditions by proprietary chromatography.

Form: 1mg/ml in PBS, 50% glycerol, filter-sterilized

Specificity: Specific to human and mouse RBP2. Can detect endogenous levels of RBP2.

Storage: Sent at 4°C or -20°C and upon arrival, briefly centrifuge and stored at -20°C

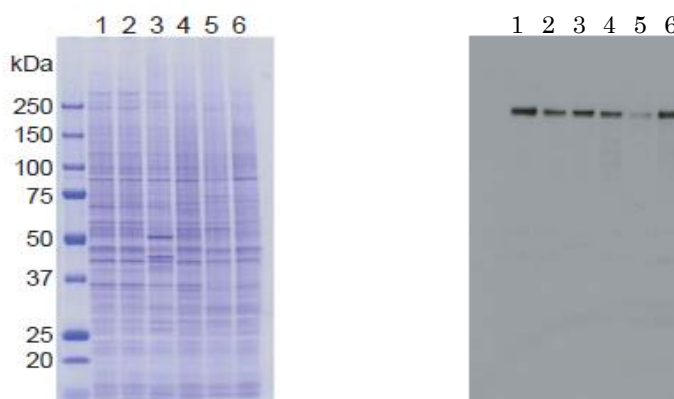
Data Link UniProtKB/Swiss-Prot [P29375](#) (KDM5A_HUMAN)

UniProtKB/Swiss-Prot [Q3UXZ9](#) (KDM5A_MOUSE)

Figure Identification of RBP2 in crude cell extracts by Western blotting with antibody 9A6.

Samples: 1. HeLa control siRNA 2. HeLa RBP2 siRNA 3. MCF7 4. U2OS
5. NIH3T3 6. J1 (mouse ES)

A. SDS-PAGE with CBB staining B. Western blotting (detection: ECL)



Related product: #[71-177](#) anti-RBP2/ JARID1A antibody, mouse monoclonal (18E8)