

Anti-Rad51 (*S. cerevisiae*) antibody, rabbit serum, ChIp grade

62-101 100 ul,

Storage: Sent at 4°C and store at -20°C

Reactivity: *S.cerevisiae* Rad 51 protein. The specificity of reaction was confirmed with rad51 mutant by WB (Fig.1)

Immunogen: Recombinant His-tagged Sc Rad51 protein (full-size)

Applications

- 1) Western blotting (1/1,000~1/10,000 dilution) (Fig. 1, 2)
- 2) Immunoprecipitation.
- 3) Chromatin Immunoprecipitation
- 4) Immunofluorescence staining

Form: Whole antiserum added with 0.09 % sodium azide

Background: *S. cerevisiae* Rad 51 protein (400 aa, 43 kDa) is a functional and structural homolog of *E.coli* RecA and human Rad51 proteins and plays a central role in DNA homologous recombination and recombination repair by promoting homologous DNA strand exchange reaction. Dmcl, Rad55, Rad57 are paralogs of Rad51 and they form complex with Rad51 and Rad52 in mediating recombination processes

Data Link SGD [RAD51/YER095W](#)

UniProtKB/Swiss-Prot : [P25454_RAD51 - Saccharomyces cerevisiae](#)

References: This antibody was used in the following publication.

Ribeyre C, Shore D. (2012) Anticheckpoint pathways at telomeres
 Nat Struct Mol Biol. 19 : 307-13 [PMID 22343724](#) **ChIP (*S. cerevisiae*)**

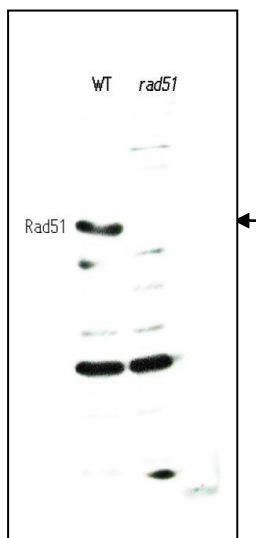


Fig.1 Western blotting of the crude cell extract of *S. cerevisiae* wild-type strain (left lane) and Rad51 deletion mutant (right lane)

The antibody was used at 1/1,000 dilution.

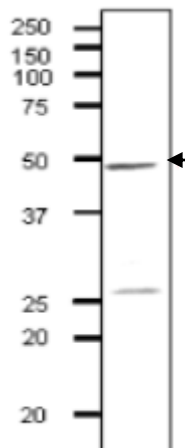


Fig.2 Identification of Rad51 protein in crude extract of *S. cerevisiae* strain BY4741.

Proteins in the extract were separated on 12.5% SDS-PAGE and transferred to membrane in wet system. The antibody was used at 1/1,000 dilution. As 2nd antibody, HRP conjugated goat anti-rabbit IgG antibody was used at 1/10,000 dilution.